

## truSculpt®flex Results



Before



12 weeks after 4 treatments  
Photos Courtesy of Somenek+Pittman



Before



8 weeks after 4 treatments  
Photos courtesy of S. Ronan, M.D.



Before



12 weeks after 6 treatments  
Photos courtesy of S. Ronan, M.D.



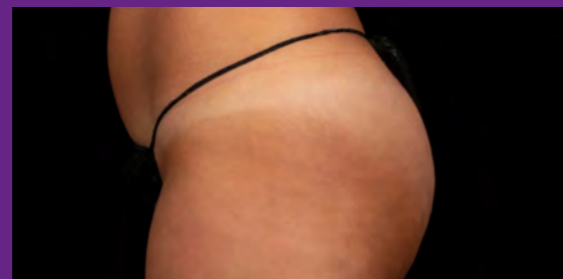
Before



Immediately after 4 treatments  
Photos courtesy of S. Ronan, M.D.



Before



Immediately after 4 treatments  
Photos courtesy of S. Ronan, M.D.

## Technical Specifications

|                         |   |
|-------------------------|---|
| Technology              | Direct Bio-Electrical Muscle Stimulation        |
| Frequency of Operation  | 4000 Hz   |
| Maximum Current Density | 0.176 mA/cm <sup>2</sup>                        |
| Maximum Power Density   | 0.0089 W/cm <sup>2</sup> @ 500 Ohms             |
| Console Dimensions      | 14"W x 17.5"L x 40"H                            |
| Console Weight          | 72 lbs  |
| Console Electrical      | Voltage: 100-240 VAC @ 50/60 Hz<br>Power: 75 VA |



### About Cutera

Cutera is a leading provider of laser and other energy-based aesthetic systems for practitioners worldwide. Since 1998, Cutera has been developing innovative, easy-to-use products that enable physicians and other qualified practitioners to offer safe and effective aesthetic treatments to their patients.



Cutera, Inc. World Headquarters  
3240 Bayshore Boulevard, Brisbane, California 94005 USA  
888-4-CUTERA or 415-657-5500 | info@cutera.com | cutera.com

<sup>1</sup> Stephen J. Ronan M.D. A Novel Bio-Electric Current Stimulation Device For Improvement Of Muscle Tone 7/2019.  
©2019 Cutera, Inc. All rights reserved. Model; Not actual patient. AP002775 rB (6/19)

truSculpt®flex

Time for Your  
Practice to  
**Flex Its Muscles**





# The Possibilities Are Stimulating

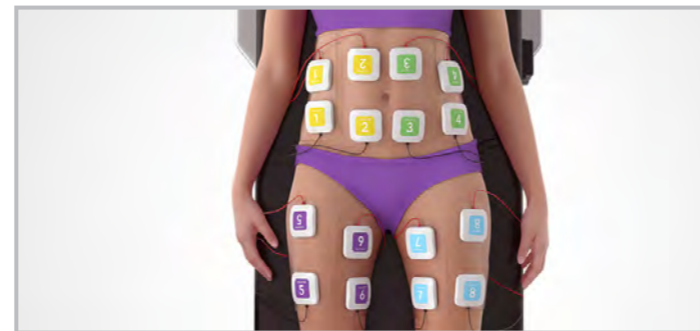
Extend the capabilities of your practice with truSculpt®flex, a muscle sculpting device that offers personalized treatments based on patient fitness level, shape, and goals.

Only truSculpt flex with Multi-Directional Stimulation (MDS) provides 3 unique treatment options, covering the largest treatment area in the body sculpting industry.

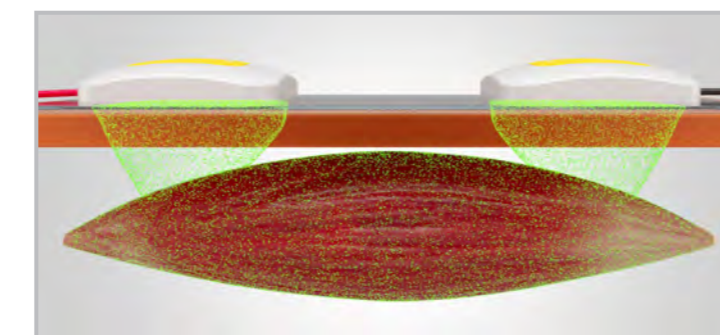
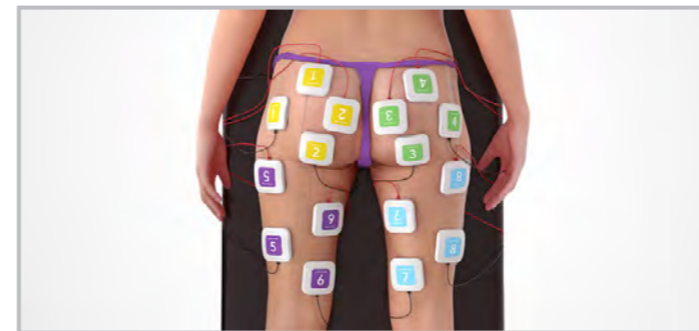


## truControl™ Technology

Targeted, selective, and customizable energy delivery



Comprehensive muscle sculpting treatment.

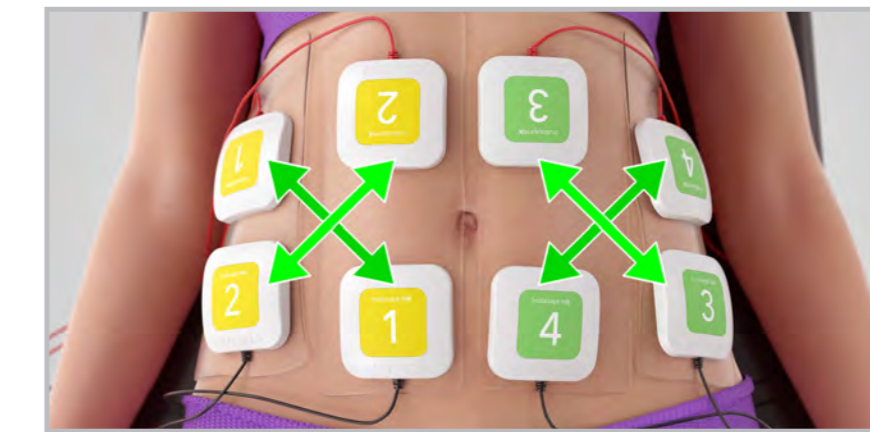


Direct channel of energy delivered to a specific muscle to build muscle endurance, strength and mass.

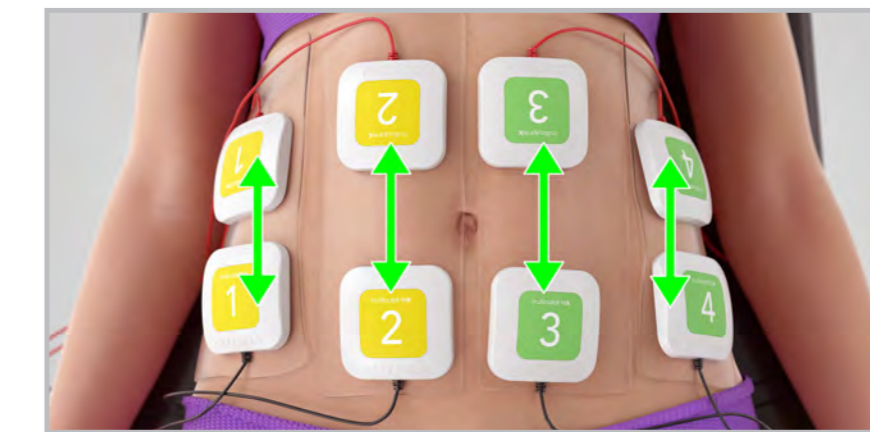


## Proprietary Multi-Directional Stimulation (MDS)

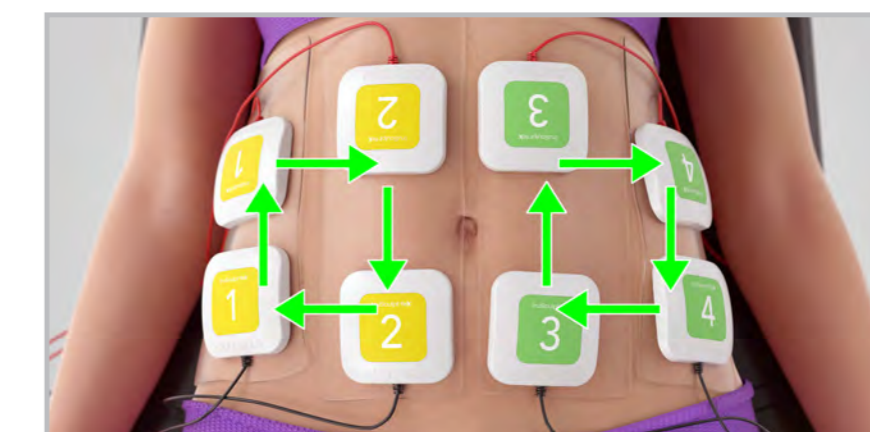
Unlike other muscle stimulation devices that deliver nonspecific or single direction energy, truSculpt flex offers three treatment modes to enhance results and efficacy.



**Prep Mode**  
Creates a twisting motion to warm up, stretch the muscles and slowly build a tolerance to muscle contractions.



**Tone Mode**  
Contracts the muscles, holds them to the point of exhaustion, and then relaxes them to increase strength and enhance endurance.



**Sculpt Mode**  
Fast, deep, sequential contractions of the muscles to build muscle mass and increase basal metabolic rate (BMR).



Personalized and Selective

- Customize the number and location of handpieces

- Tailor treatment to patient's fitness level, shape, and goals

- Comfortably targets small and large muscle groups



Treats 8 Areas Simultaneously

- Providing a complete muscle toning solution with no downtime

- Precisely target multiple independent muscle groups



Offers 3 Treatment Modes

- Delivers 3 workouts by replicating intensified twisting, squat, and crunch actions

- Builds muscle endurance, increases core strength, develops new muscle fibers, boosts basal metabolic rate



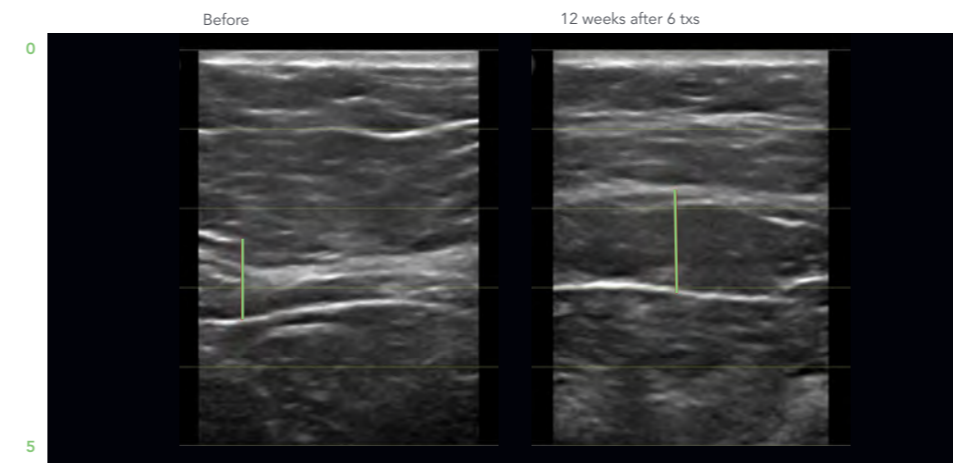
Delivers High Throughput and ROI

- Efficiently treat more areas per session

- Increase revenue with high patient satisfaction

## Ultrasound Results

30% Muscle Thickness Increase<sup>1</sup>



1.0 cm MT  
Photos courtesy of S. Ronan, M.D.

1.3 cm MT 3.0 mm or 30% MTI



#gonorthmedical\_derma



[www.derma.gonorthmedical.com](http://www.derma.gonorthmedical.com)

[info@gonorthmedical.com](mailto:info@gonorthmedical.com)

SWEDEN - NORWAY - DENMARK - ISLAND