

## excel V+ Results

### Rosacea

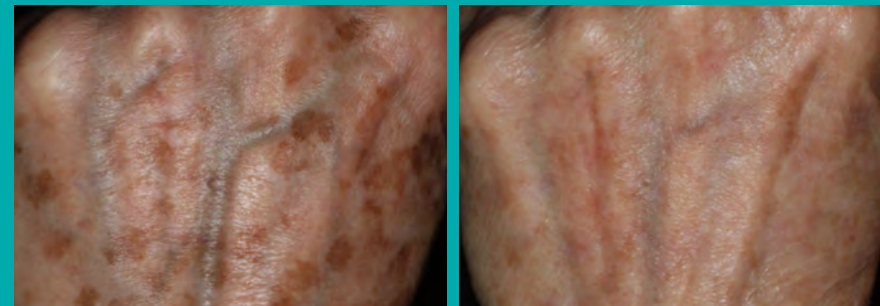


Before

After 2 treatments

Photos courtesy of E.V. Ross, M.D.

### Age Spots



Before

After 2 treatments

Photos courtesy of K. Stankiewicz, M.D.

### Veins



Before

After 1 treatment

Photos courtesy of H. Heise, M.D.

### Acne Scars



Before

After 4 treatments

Photos courtesy of D. Vasily, M.D.

## Technical Specifications

	CoolView	
<b>Wavelength</b>	532 nm	1064 nm
<b>Fluence Range</b>	1.8 - 42 J/cm <sup>2</sup>	2 - 300 J/cm <sup>2</sup>
<b>Pulse Duration</b>	0.5 - 40 ms	5 - 60 ms
<b>Rep Rate</b>	0 - 4 Hz	0 - 2 Hz
<b>Spot Size</b>	2 - 16 mm	
<b>Cooling</b>	Contact Sapphire, Adjustable 5 - 20° C	

	Genesis V		Dermastat
<b>Wavelength</b>	532 nm	1064 nm	532 nm
<b>Fluence Range</b>	0.5 - 2 J/cm <sup>2</sup>	4 - 7 J/cm <sup>2</sup>	6 - 40 J/cm <sup>2</sup>
<b>Pulse Duration</b>	0.5 & 1 ms	0.3 ms	0.5 - 20 ms
<b>Rep Rate</b>	0 - 4 Hz; 10 Hz	0 - 10 Hz	0 - 4 Hz
<b>Spot Size</b>	8 mm		2 mm



### About Cutera

Cutera is a leading provider of laser and other energy-based aesthetic systems for practitioners worldwide. Since 1998, Cutera has been developing innovative, easy-to-use products that enable physicians and other qualified practitioners to offer safe and effective aesthetic treatments to their patients.



Cutera, Inc. World Headquarters  
3240 Bayshore Boulevard, Brisbane, California 94005 USA  
888-4-CUTERA or 415-657-5500 | info@cutera.com | cutera.com

<sup>1</sup> Rosacea.org <sup>2</sup> <https://www.everydayhealth.com/skin-and-beauty/what-causes-spider-veins.aspx> <sup>3</sup> <https://www.alliedmarketresearch.com/tattoo-removal-market>  
<sup>4</sup> ASAPS 2017 Statistics <sup>5</sup> Data on file

©2019 Cutera, Inc. All rights reserved. Model; Not actual patient. AP2429 rB (5/19)

excel<sup>®</sup>V+

The New  
Power in  
**Vascular and  
Pigmentation  
Treatments**



**CUTERA**<sup>®</sup>  
FACE + BODY AESTHETIC SOLUTIONS

excel<sup>®</sup>V+

## Give Yourself an Unfair Advantage

With design input from leading dermatologists, excel V+ delivers the power, precision, and performance to safely and effectively treat a wider range of vascular and pigmentary conditions.

Featuring two clinically proven wavelengths, large spot sizes up to 16 mm, and higher energy, excel V+ puts you ahead of the rest and expands your treatment capabilities in 1/2 the time.

### Premium Technology

- Two clinically proven wavelengths
- truPulse energy delivery
- Solid-state design with auto calibration

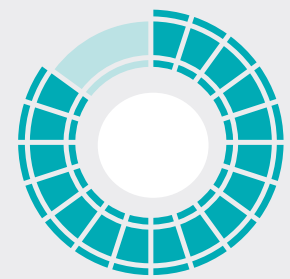
### Enhanced Experience

- Fully customizable treatments
- Intuitive interface with pre-set parameters
- Superior integrated contact cooling

### Maximum ROI

- No consumables or disposables
- 5 unique operating modes
- More than 20 unique treatment options

It is estimated that  
**415M**  
Individuals suffer from Rosacea.<sup>1</sup>



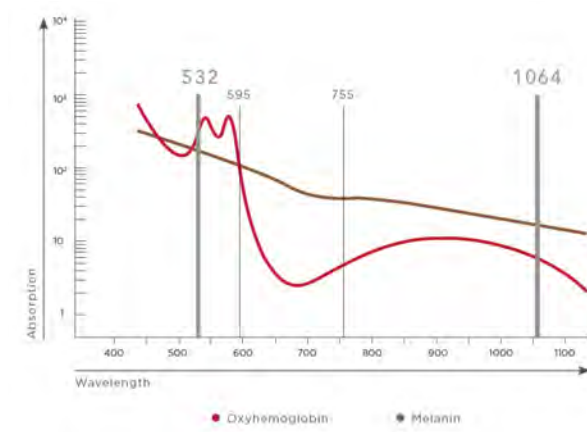
**84%**  
Individuals have spider veins.<sup>2</sup>

Photorejuvenation ranks in the  
**TOP 10**  
Non-surgical procedures in 2018.<sup>4</sup>



**40%**  
Individuals suffer from pigment concerns.<sup>3</sup>

## Power, Precision and Performance



### The Widest Range of Indications

- Two clinically proven wavelengths - 532 + 1064 nm
- Addresses superficial + deep vascular lesions, pigment + skin revitalization concerns
- High safety margin for treatments on all skin types

### 50% More Power

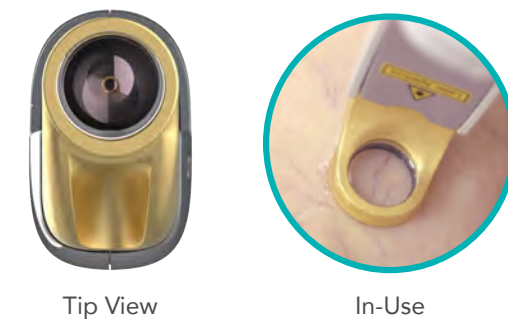
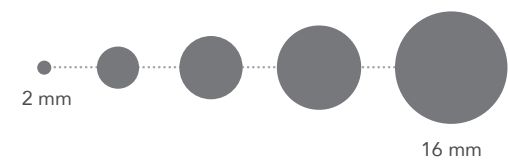
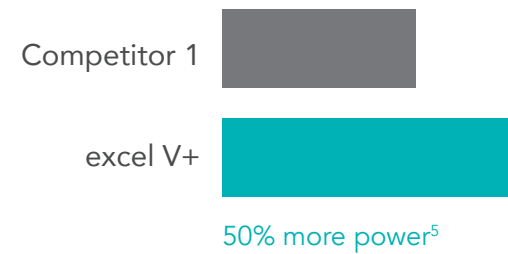
- Features a Lithium Triborate Laser Boosted Optic (LBO) + truPulse Delivery
- Enhanced range of specifications
- Consistent energy delivery, performance + reliability

### 2X Faster Treatments

- Adjustable spot sizes from 2-16 mm
- Largest spot size in its class
- Increased practice efficiency, throughput + ROI

### Increased Patient Comfort and Safety

- Integrated sapphire contact cooling, adjustable from 5-20 °C
- Cools before, during and after each pulse
- Enables effective treatments on pigment and photodamage



## 5 Avenues of Revenue

### CoolView 1064 nm

Pioneered by Cutera, the 1064 nm Nd:YAG delivers an effective, yet safe, treatment for deeper, darker vascular lesions and cutaneous lesions on all skin types.

### CoolView 532 nm

Highly absorbed by oxyhemoglobin and melanin, the 532 nm wavelength is the ideal wavelength for addressing superficial vascular lesions and pigmented lesions including rosacea, photodamage and facial telangiectasias.

### Laser Genesis

Cutera's signature procedure, laser genesis delivers gentle micro-pulses of laser light to target the microvasculature in the skin and stimulate collagen production to improve the appearance of fine lines, wrinkles and scars.

### Green Genesis

A new micro-pulsed 532 nm treatment designed to address reds and browns on the face and body, comfortably, with no downtime. Combine with the Laser Genesis treatment for an all-around non-ablative skin revitalization treatment.

### 532 nm Dermastat

A pencil-like tracing pen provides enhanced precision and versatility to quickly treat small vascular and pigmented lesions on the face and body with ease.





#gonorthmedical\_derma



[www.derma.gonorthmedical.com](http://www.derma.gonorthmedical.com)

[info@gonorthmedical.com](mailto:info@gonorthmedical.com)

SWEDEN - NORWAY - DENMARK - ISLAND