



## WESHAPE Pro

Circumference Reduction

Cellulite Reduction

Body Contouring

Skin Tightening

# WESHAPE Pro

Intelligent body shaping system

- Weshape Pro combines many advanced technologies, reduces localized fat deposits, sculptures perfect body shape, which can provide comfortable and noninvasive treatment.
- Global installed capacity is over 2000. Over 100k persons used Weshape Pro.



No Downtime



Skin Tightening

- Intelligent bipolar RF delivers high power thermal energy to 150W
  - Minimal treatment times and sessions
  - Achieve end point faster
  - Better clinical effect.
- Dynamic monitoring of skin temperature
  - Monitor and control end point temperature
  - Precise thermal dose threshold
  - More safety ,higher efficiency



### WTighten

WTighten is used for local area sculpture and skin tightening, like under chin, neck, man-boobs, lower leg and arms.



### WSculptor

WSculptor is used for big size of body part, like buttock, abdomen and thigh.



Changeable treatment head design offers clean system.



Cellulite Reduction



Body Contour



Body Shaping



Postpartum Body Shaping



Infrared heating technology



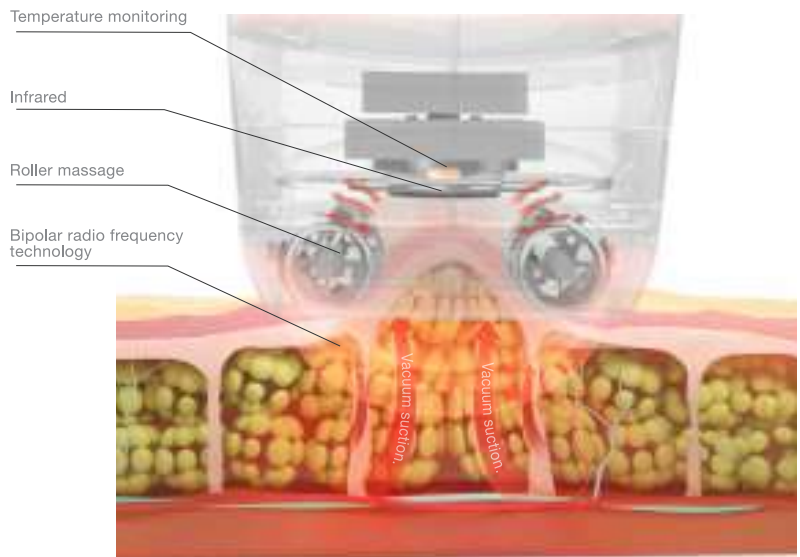
Bipolar radio frequency technology



Vacuum suction technology

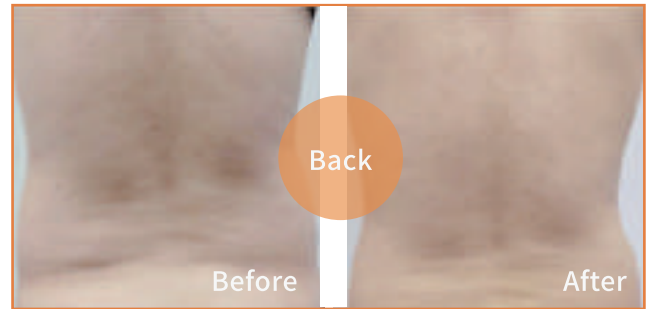
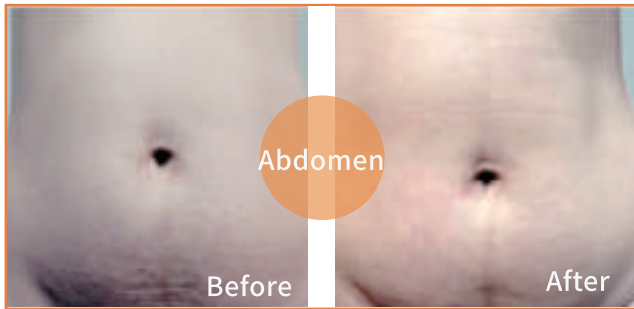


Roller massage



Tehnologies work simultaneously, provide significant effective energy, which promote the cell metabolism, help collagen regeneration, stimulate fiber reconstruction and promote skin tightening.

## Before & After



## Technical Specifications

| Applicator     | WSculptor           | WTighten    |
|----------------|---------------------|-------------|
| RF Power       | 150W                |             |
| RF Frequency   | 40.68MHz            |             |
| IR             | 5W                  |             |
| Spectrum       | 650nm               |             |
| Vacuum         | 5 levels adjustment |             |
| Treatment Area | 74mm x 52mm         | 43mm x 35mm |
| Massage Roller | Yes                 | No          |
| Weight         | 45Kg                |             |
| Dimensions     | 52cm x 55cm x 150cm |             |

Wingderm Electro-Optics Ltd.

Address: Room 312,16th Building, Northen Territory, Beijing 100192, China

☎ (86 10) 62910812

🌐 [www.wingderm.com](http://www.wingderm.com)

✉ [info@wingderm.com](mailto:info@wingderm.com)

For international use only.

©2019 All Rights Reserved. Wingderm, Weshape are registered trademarks of Wingderm Electro-Optics Ltd. and may be registered in certain jurisdictions.

R230001 A3



#gonorthmedical\_derma



[www.derma.gonorthmedical.com](http://www.derma.gonorthmedical.com)

[info@gonorthmedical.com](mailto:info@gonorthmedical.com)

SWEDEN - NORWAY - DENMARK - ISLAND